

PLAYBILL

THE ART CENTRE THEATRE



Suite Surrender

1400 Summit Ave Suite
E plano Tx
Phone- 972 881 3228
Feb 15 -March 1

THE ART CENTRE THEATRE

artcentrtheatre.com

Directed by Clive Childress and
Rosalinda Maria Valenzuela

PLOT OF SHOW

Two divas in 1942 stay at the same suite at the luxurious Palm Beach Royale hotel before performing at a war benefit concert. The two divas have a feud that may or may not end well. Will the assistants, general manager of the hotel, society lady, bellhops, reporter and adored doggy survive this epic feud?

CAST

Bernard S. Dunlap	Gravity Coleman
.....	Bo Show
Claudia McFadden	Frances Evans
Athena Sinclair	Angie Stoehr
Murphy Stevens	Karol Uribe
Ms. Pippet.....	Melodie McFarland
Dora del Rio	Ronnie Hayashi
.....	Miki R. Nakamoto
Mrs. Evertt P. Osgood.....	Andrea Gonzalez
.....	Sara Ledesma
Francis.....	Julian F. Guzman Ardila
Otis.....	Rosalinda Maria Valenzuela
Mr. Boodles.....	Noodlez "piyibu" Valenzuela

CREW

Director	Clive Childress
.....	Rosalinda M. Valenzuela
Tech	Miles Golembiewski
Costume Designer	Frances Evans

WHO'S WHO



Gravity Coleman (Mr. Dunlap)

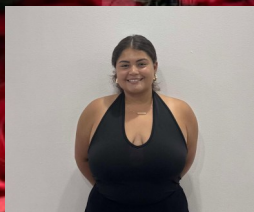
Gravity Coleman is making his theater debut. He is a talented dog trainer and veterinary technician and is also a proud father of four. His positive nature and enthusiasm has inspired the cast to do their best for this show. He is nervous but excited to perform in his first show. Gravity would like to dedicate this show to his kids.



Frances Evans (Athena Sinclair)

Frances Evans has been in numerous ACT productions, including her latest performance in ACES! last August. She has enjoyed working with this talented cast and crew. She hopes you enjoy the show! Be sure to visit the ACT website for more exciting productions throughout the year.

Andrea Gonzalez (Mrs. Osgood)

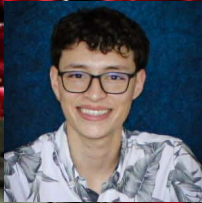


Andrea Gonzalez is a second-year student at Collin College pursuing a degree in International Business and Supply Chain Management. Suite Surrender marks her first time acting on stage, but performing has always been a dream of hers. She was thrilled to be cast as Mrs. Osgood and is grateful for how welcoming and supportive the cast has been throughout the process. Playing Mrs. Osgood, an eccentric, wealthy woman, was an absolute joy. Andrea is excited to take the stage and hopes to continue working on future projects with ACT.

duction.

WHO'S WHO

Julian F. Guzman Ardila (Francis)



Julian F. Guzman Ardila is making his stage debut in *Suite Surrender* as Francis. A 20-year-old payment poster for OrthoMed Anesthesia by day and a student at Collin College by night, Julian's true passion lies in performance and music. Though this is his first play, his dream is to one day become the lead singer of a salsa orchestra. Julian has always been drawn to the energy and rhythm of Latin music, and he loves to sing whenever he can. He's excited to explore the world of theater and bring his unique energy to the stage in this production.

Ronnie Hayashi (Dora del Rio)



Ronnie Hayashi is a student in her last semester at Collin College. She will be transferring to a 4-year university in the Fall, where she will be studying Business Analytics. Additionally, she is passionate about baking, fashion, going to local farmer's markets and coffee shops in her free time, eager to explore the area surrounding her and curious to expand her knowledge. She has been frequently involved in the theatre throughout her middle school years, and is excited to be returning to the stage. In *Suite Surrender*, Ronnie portrays Dora Del Rio, the gossip columnist determined to cover the next big scandal, bringing chaos and comedy to the show.

Sara Ledesma (Mrs. Osgood)



Sara Ledesma is a student from Collin College. She is playing the fabulous Mrs. Osgood. This is her first play in many years and she is excited to get back out on stage. She is very thankful for her professor Dr Valenzuela for helping her get back out there. She dedicates this performance to her family.

YOUTH SCHOLAR-



ACT has a fund that specifically helps people if they need a discount for their children to participate in ACT's programming.

It can help the price drop for families in need sometimes 90%.

If you're wanting to help children continue or start quality programming here at ACT please stop by our concession stand. Every dollar goes straight into the Youth Scholarship Fund.



ACT's Programs helps Children learn:

- **Social Skills**
- **Team Work**
- **Public Speaking**
- **Body Language**
- **Gain Confidence**
- **Improvisational Skills**
- **Self Awareness**
- **Acting Techniques**
- **Singing Techniques**
- **Dance Techniques**
- **And Many More**

WHO'S WHO

Melodie McFarland (Ms. Pippet)



Melodie hails from the Big Easy...New Orleans, LA. She has lived in Dallas for 30+ years. "All the worlds a stage and we are but it's bit players" has been her personal motto. She was bitten by the acting bug from a very young age. She performed in stage productions in High School, college, church, PTA and other events until life threw a 'curve ball', she caught it and now works as a Payroll Tax Accountant. This is her debut play with ACT. Her hobbies are writing, swimming and cheering for her favorite team "Da Saints". She loves her husband and children fiercely and simply adores and idolizes her granddaughter. In her free time, she flies down the highway past San Antonio to spend time with her precious granddaughter. Yes Ms. McFadden!

Bo Show (Mr. Dunlap)



Bo is a talented actor, comedian, and director who has participated in numerous plays in over two decades. He is very happy to be in this play and to be working with his favorite directors Paul and Rosalinda.

Angie Stoehr, MD. (Claudia McFaden)



This is Angie Stoehr's second play at ACT. She's an MD gynecologist and functional medicine specialist in Frisco and uses acting as a means for tickling the parts of her brain that don't get activated at her work. She also enjoys powerlifting, gardening, and going to hockey games with her fantastic husband and two children. Claudia McFadden has been such a joy for her to play! Enjoy the show, and if you happen to see my secretary...never mind, get out!

ACT members, Individual & Corporate Sponsors help us to keep the stage lights on, while enjoying discounts on ACT tickets and tuitions! Head over to the Web site today to become a member!

Individual Sponsorships

<p>Donation Tier: Opal</p> <p>Donation Amount: \$5 - \$50</p> <p>PERKS : Website Listing (WL)</p> <p>Donate Here</p>	<p>Donation Tier: Emerald</p> <p>Donation Amount: \$51 - \$100</p> <p>PERKS : Website Listing (WL) Program Listing (PL)</p> <p>Donate Here</p>	<p>Donation Tier: Ruby</p> <p>Donation Amount: \$101 - \$500</p> <p>PERKS : Website Listing (WL) Program Listing (PL) Ticket Discount 5%</p> <p>Donate Here</p>	<p>Donation Tier: Sapphire</p> <p>Donation Amount: \$501 - \$1,000</p> <p>PERKS : Website Listing (WL) Program Listing (PL) Ticket Discount 10% Tuition Discount 15%</p> <p>Donate Here</p>	<p>Donation Tier: Diamond</p> <p>Donation Amount: \$1,001 - \$2,500</p> <p>PERKS : Website Listing (WL) Program Listing (PL) Ticket Discount 15% Tuition Discount 20% Free ACT T-Shirt</p> <p>Donate Here</p>
-----------------------------------------------------------------------------------------------------------------------------------------------------------------------	-----------------------------------------------------------------------------------------------------------------------------------------------------------------------------------------------------	--------------------------------------------------------------------------------------------------------------------------------------------------------------------------------------------------------------------------	----------------------------------------------------------------------------------------------------------------------------------------------------------------------------------------------------------------------------------------------------------	--------------------------------------------------------------------------------------------------------------------------------------------------------------------------------------------------------------------------------------------------------------------------------

Corporate Sponsorships

<p>Donation Tier: Patron</p> <p>Donation Amount: \$150 - \$250</p> <p>PERKS : - Recognition in Shows Programs</p> <p>Donate Here</p>	<p>Donation Tier: Actor</p> <p>Donation Amount: \$251 - \$500</p> <p>PERKS : - Recognition in Shows Programs - Listed on ACT Website (Text Only in corporate sponsorships.)</p> <p>Donate Here</p>	<p>Donation Tier: Techie</p> <p>Donation Amount: \$501 - \$750</p> <p>PERKS : - Recognition in Shows Programs - Listed on ACT Website (Text Only in corporate sponsorships.) - Ad placed in our Program Quarter size (4"x2" (400x200px))</p> <p>Donate Here</p>	<p>Donation Tier: Director</p> <p>Donation Amount: \$751 - \$1,000</p> <p>PERKS : - Recognition in Shows Programs - Listed on ACT Website (Text Only in corporate sponsorships.) - Ad placed in our Program Half Page size (4"x3-3" (400 x 350px)) - Ad placed on our Website with Link</p> <p>Donate Here</p>	<p>Donation Tier: Producer</p> <p>Donation Amount: \$1,000 - \$2,500</p> <p>PERKS : - Recognition in Shows Programs - Listed on ACT Website (Text Only in corporate sponsorships.) - Ad placed in our Program Full Page size (4"x8" (400 x 800px)) - Ad placed on our Website with Link - News Letter Access</p> <p>Donate Here</p>	<p>Donation Tier: Executive</p> <p>Donation Amount: \$2,500 - \$5,000</p> <p>PERKS : - Recognition in Shows Programs - Listed on ACT Website (Text Only in corporate sponsorships.) - Ad placed in our Program Full Page size (4"x8" (400 x 800px)) - Ad placed on our Website with Link - News Letter Access - Product Placement in a Show</p> <p>Donate Here</p>
---------------------------------------------------------------------------------------------------------------------------------------------------------------------------------------	---------------------------------------------------------------------------------------------------------------------------------------------------------------------------------------------------------------------------------------------------------	--------------------------------------------------------------------------------------------------------------------------------------------------------------------------------------------------------------------------------------------------------------------------------------------------------------------------	-----------------------------------------------------------------------------------------------------------------------------------------------------------------------------------------------------------------------------------------------------------------------------------------------------------------------------------------------------------------------------	------------------------------------------------------------------------------------------------------------------------------------------------------------------------------------------------------------------------------------------------------------------------------------------------------------------------------------------------------------------------------------------------------	-----------------------------------------------------------------------------------------------------------------------------------------------------------------------------------------------------------------------------------------------------------------------------------------------------------------------------------------------------------------------------------------------------------------------------------------

FLEXPASS

ACT Flexpasses and Golden Tickets are great ways to save at the box office! Discounts up to 30%.

WHO'S WHO



Karol Uribe (Murphy)

Karol Uribe is a 19-year-old Mexican emerging artist whose passion for the arts shines both on and off the stage. Suite Surrender marks her third theatrical production, reflecting her continued growth in the performing arts. She is currently pursuing her associate studies at Collin College with plans to transfer, majoring in Architecture, while also working as a freelance photographer, blending creativity with discipline across multiple artistic fields. In Suite Surrender, Karol portrays Murphy, the witty and devoted secretary to one of the show's glamorous divas, adding charm, humor, and warmth to the stage. Deeply passionate about the arts, Karol dreams of living fully from her art, whether on stage, behind the camera, or through architectural design, and aspires to one day create an architectural work worthy of the Pritzker Prize.



Noodlez "Piyibu" (Mr. Boodles)

Ms. Noodlez is happy to debut in her first play. She is a four year old Bichon frizzed who lives with two cats and 3 humans. She enjoys eating chicken nuggets and French fries. She dedicates this play to her family.

WHO'S WHO

Miles Golembiewski (Tech)



Miles Golembiewski is currently a senior at Plano Senior High School and in his second year of theatre. At PSHS Miles is the head of run crew, worked set, and Mics for The Play That Goes Wrong and Once Upon a Mattress. In his spare time outside of Theatre Miles is a national qualifier short film director and an honorable mention academic all state football player.



Miki Rosalinda Nakamoto (Dora) Miki is delighted you came! This is her 22nd production in her fourth year doing theatre. Her favorite roles include Ellie in The Whale and Pearl Krabs in Sponge-Bob the Musical. Over the summer, she won the title of Miss Teen Global Glamour 25-27 and performs at cultural events. Outside of performing, she serves as her class president, an assistant Tae Kwon Do instructor, and works as a math tutor. She thanks her close ones for their endless support. Sit back, relax, and enjoy the show!

WHO'S WHO

Clive Childress, (co-director)

Paul is a seasoned actor and director who has performed since the age of five. In fact, he directed his first play when he was 18 years old. His unique personality, and director skills make his plays fascinating. He is a proud father of a doggy named Milo. He dedicates this play to his family and his boyfriend who is doing his debut in it.



Rosalinda M. Valenzuela, Ph.D. (Otis, Co-Director)

Rosalinda is a Political Science Professor by day and a bellhop by night. This is her ninth show at ACT, serving, having served as assistant director, co-director, and director in a few of them. She is a political analyst and "Reina de La Cultura" beauty queen. This play is very especial to her since most of the actors are her students from LEAP (Latinx empowerment, awareness and Prosperity) and Ignite (Political power in every young woman) at Collin College. She also enjoys performing as Otis who has taught her how to fall and stand up in life, and be her true self. She is very happy to co-direct with one of the directors that she admires the most. She dedicates this show to her awesome family and students. Stay awesome and...I am not here.

